

InVivoMAb anti-mouse PD-L1 (B7-H1)

Lot Specific Information

Lot Number:	Lot Specific*
Volume:	Lot Specific*
Concentration:	Lot Specific* (generally 4 to 11 mg/ml) *
Total Protein:	Lot Specific*

*This information will be noted on the certificate of analysis that ships with this product.

Product Information

Catalog Number:	BE0101
Clone:	10F.9G2
Isotype:	Rat IgG2b, κ
Recommended Isotype Control(s):	InVivoMAb rat IgG2b isotype control, anti-keyhole limpet hemocyanin
Recommended Dilution Buffer:	InVivoPure pH 6.5 Dilution Buffer
Immunogen:	Mouse CD274 <i>in vivo</i> PD-L1 blockade Immunofluorescence Immunohistochemistry (frozen) Flow cytometry Western blot
Reported Applications:	
Formulation:	PBS, pH 6.5 Contains no stabilizers or preservatives
Endotoxin:	<2EU/mg (<0.002EU/μg) Determined by LAL gel clotting assay
Purity:	>95% Determined by SDS-PAGE
Sterility:	0.2 μm filtered
Production:	Purified from tissue culture supernatant in an animal free facility
Purification:	Protein G
RRID:	AB_10949073
Molecular Weight:	150 kDa

Description

The 10F.9G2 monoclonal antibody reacts with mouse PD-L1 (programmed death ligand 1) also known as B7-H1 or CD274. PD-L1 is a 40 kDa type I transmembrane protein that belongs to the B7 family of the Ig superfamily. PD-L1 is expressed on T lymphocytes, B lymphocytes, NK cells, dendritic cells, as well as IFN γ stimulated monocytes, epithelial cells and endothelial cells. PD-L1 binds to its receptor, PD-1, found on CD4 and CD8 thymocytes as well as activated T and B lymphocytes and myeloid cells. Engagement of PD-L1 with PD-1 leads to inhibition of TCR-mediated T cell proliferation and cytokine production. PD-L1 is thought to play an important role in tumor immune evasion. Induced PD-L1 expression is common in many tumors and results in increased resistance of tumor cells to CD8 T cell mediated lysis. In mouse models of melanoma, tumor growth can be transiently arrested via treatment with antibodies which block the interaction between PD-L1 and PD-1. The 10F.9G2 antibody has been shown to block the interaction between PD-L1 and PD-1 and between PD-L1 and B7-1 (CD80).

Shelf-life and Storage

Store at the stock concentration at 4°C. **Do not freeze.**

All Bio X Cell antibodies have a guaranteed shelf-life of one year from the date of customer receipt when stored as recommended. It is not uncommon for a floccule or precipitate to appear during storage. The floccule is typically buffer salts precipitating out of solution or a small bit of protein aggregation. For information on how to remove floccules or precipitates see our FAQ's at bxcell.com/faqs.

Protocol Information

Since applications vary, each investigator should use the application references as a guide to help estimate the appropriate dose or concentration. The dose or concentration can be further optimized experimentally in a dose response or titration experiment.

Application References

For a complete list of references, visit <https://bxcell.com/product/m-pdl-1/#references> or scan the QR code below.

Bio X Cell, Inc.

bxcell.com
1.866.787.3444
customerservice@bxcell.com

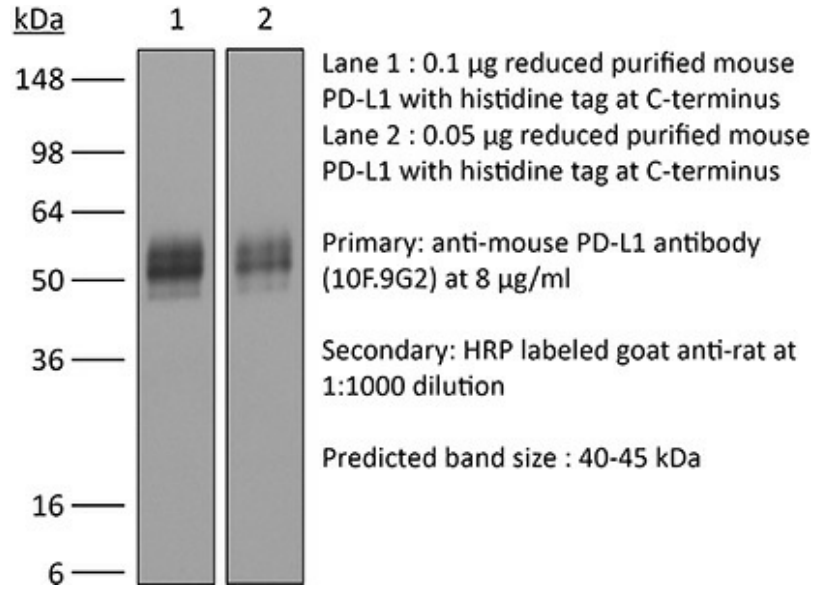
Conditions: For Research Use Only. Not for use in diagnostic or therapeutic procedures. Not for resale.

Bio X Cell, Bio X Cell Logo and all other trademarks are the property of Bio X Cell, Inc. © 2020 Bio X Cell



Binding Validation

Western blot data shown below confirms that this clone binds to its target antigen. For lot specific binding validation data, email technicalservice@bxcell.com.



Bio X Cell, Inc.

bxcell.com
1.866.787.3444

customerservice@bxcell.com

Conditions: For Research Use Only. Not for use in diagnostic or therapeutic procedures. Not for resale.

Bio X Cell, Bio X Cell Logo and all other trademarks are the property of Bio X Cell, Inc. © 2020 Bio X Cell