

InVivoMAb anti-mouse CD4

Lot Specific Information

Lot Number:	Lot Specific*
Volume:	Lot Specific*
Concentration:	Lot Specific* (generally 4 to 11 mg/ml) *
Total Protein:	Lot Specific*

*This information will be noted on the certificate of analysis that ships with this product.

Product Information

Catalog Number:	BE0003-1
Clone:	GK1.5
Isotype:	Rat IgG2b, κ
Recommended Isotype Control(s):	InVivoMAb rat IgG2b isotype control, anti-keyhole limpet hemocyanin
Recommended Dilution Buffer:	InVivoPure pH 6.5 Dilution Buffer
Immunogen:	Mouse CTL clone V4 <i>in vivo</i> CD4+ T cell depletion
Reported Applications:	Flow cytometry Western blot
Formulation:	PBS, pH 6.5 Contains no stabilizers or preservatives
Endotoxin:	<2EU/mg (<0.002EU/μg) Determined by LAL gel clotting assay
Purity:	>95% Determined by SDS-PAGE
Sterility:	0.2 μM filtered
Production:	Purified from tissue culture supernatant in an animal free facility
Purification:	Protein G
RRID:	AB_1107636
Molecular Weight:	150 kDa

Description

The GK1.5 monoclonal antibody reacts with the mouse CD4. The CD4 antigen is a 55 kDa cell surface type I membrane glycoprotein belonging to the immunoglobulin superfamily. CD4 acts as a co-receptor which in cooperation with the T cell receptor (TCR) interacts with class II MHC molecules displayed by antigen presenting cells (APC). CD4 is expressed by the majority of thymocytes, most helper T cells, a subset of NK-T cells and weakly by dendritic cells and macrophages. CD4 plays an important role in the development of T cells and is required for mature T cells to function optimally. The GK1.5 antibody has been shown to compete with clones YTS 177 and YTS 191 for CD4 binding.

Shelf-life and Storage

Store at the stock concentration at 4°C. **Do not freeze.**

All Bio X Cell antibodies have a guaranteed shelf-life of one year from the date of customer receipt when stored as recommended. It is not uncommon for a floccule or precipitate to appear during storage. The floccule is typically buffer salts precipitating out of solution or a small bit of protein aggregation. For information on how to remove floccules or precipitates see our FAQ's at bxcell.com/faqs.

Protocol Information

Since applications vary, each investigator should use the application references as a guide to help estimate the appropriate dose or concentration. The dose or concentration can be further optimized experimentally in a dose response or titration experiment.

Application References

For a complete list of references, visit <https://bxcell.com/product/m-cd4/#references> or scan the QR code below.

Bio X Cell, Inc.

bxcell.com
1.866.787.3444
customerservice@bxcell.com

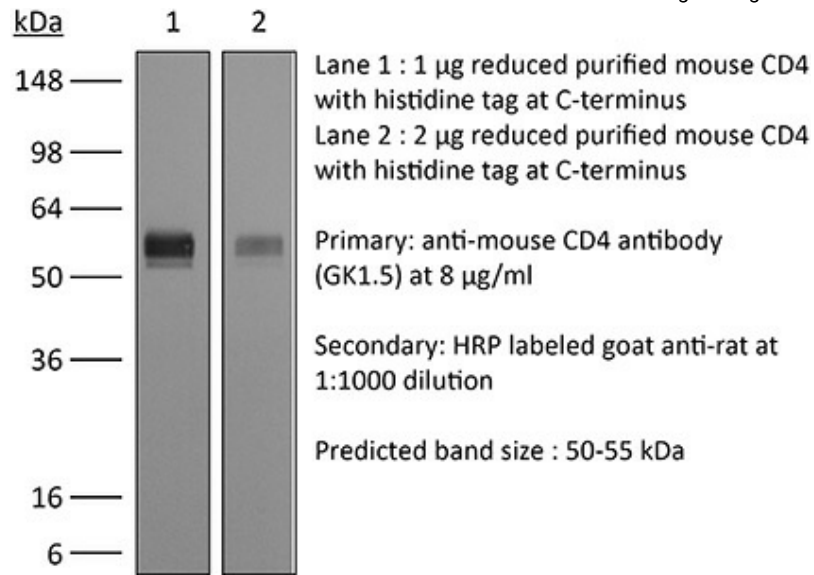
Conditions: For Research Use Only. Not for use in diagnostic or therapeutic procedures. Not for resale.

Bio X Cell, Bio X Cell Logo and all other trademarks are the property of Bio X Cell, Inc. © 2020 Bio X Cell



Binding Validation

Western blot data shown below confirms that this clone binds to its target antigen. For lot specific binding validation data, email technicalservice@bxcell.com.



Bio X Cell, Inc.

bxcell.com
1.866.787.3444
customerservice@bxcell.com

Conditions: For Research Use Only. Not for use in diagnostic or therapeutic procedures. Not for resale.

Bio X Cell, Bio X Cell Logo and all other trademarks are the property of Bio X Cell, Inc. © 2020 Bio X Cell